

# ESIP Agriculture and Climate Cluster!

**Bill Teng (William.L.Teng@nasa.gov)**  
**Nancy Hoebelheinrich (nhoebel@kmotifs.com)**



**A simple one-sentence, fill-in-the-blanks template can help you identify a story structure**

(main characters)



U.S. Climate Resilience Toolkit



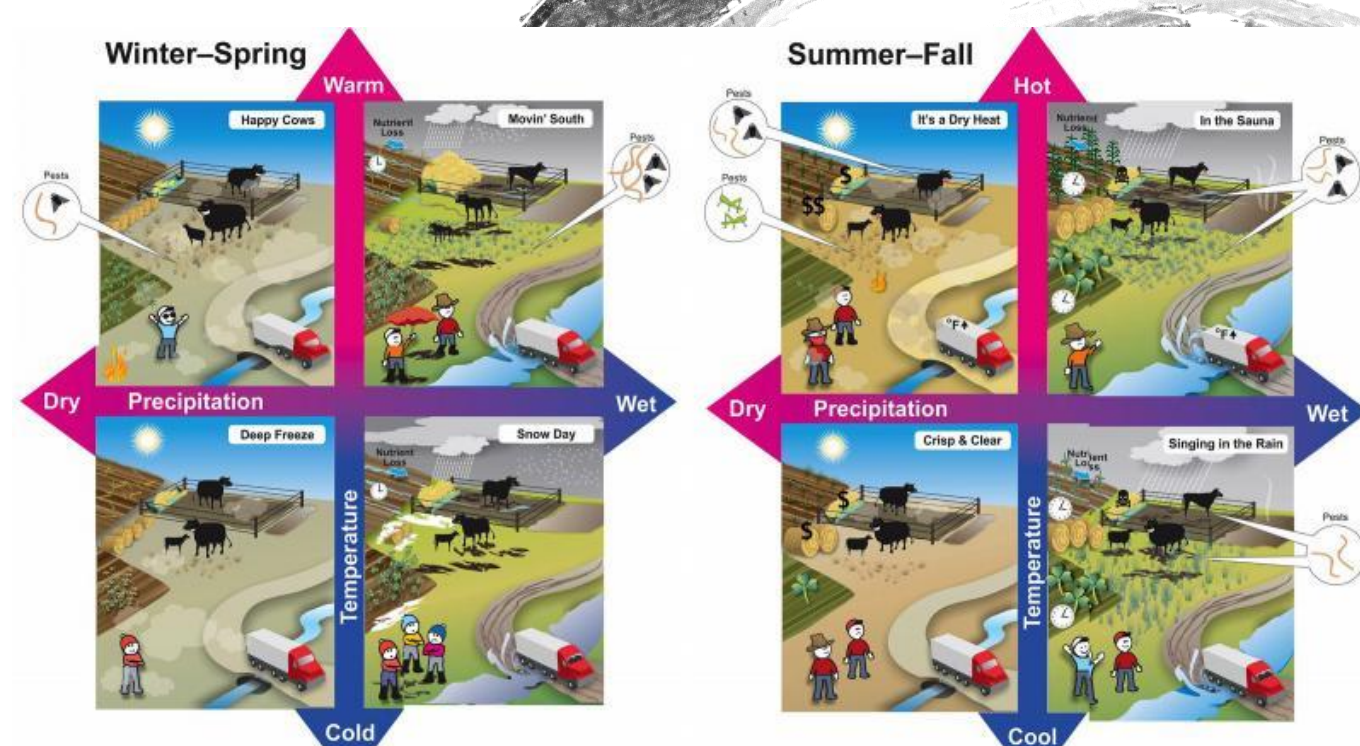
**AND**

## Climate Change

## Northern Plains Climate Hub

## Southwest Climate Hub

**(Goal)**



## Scenario planning to promote resilience in beef production

## BUT

**THEREFORE**

**(Solution)**

## 2019 ESIP Winter Meeting:

## Session on “Soils data integration challenges throughout the research lifecycle”



Story structure paraphrased from  
Randy Olsen via Andy Revkin



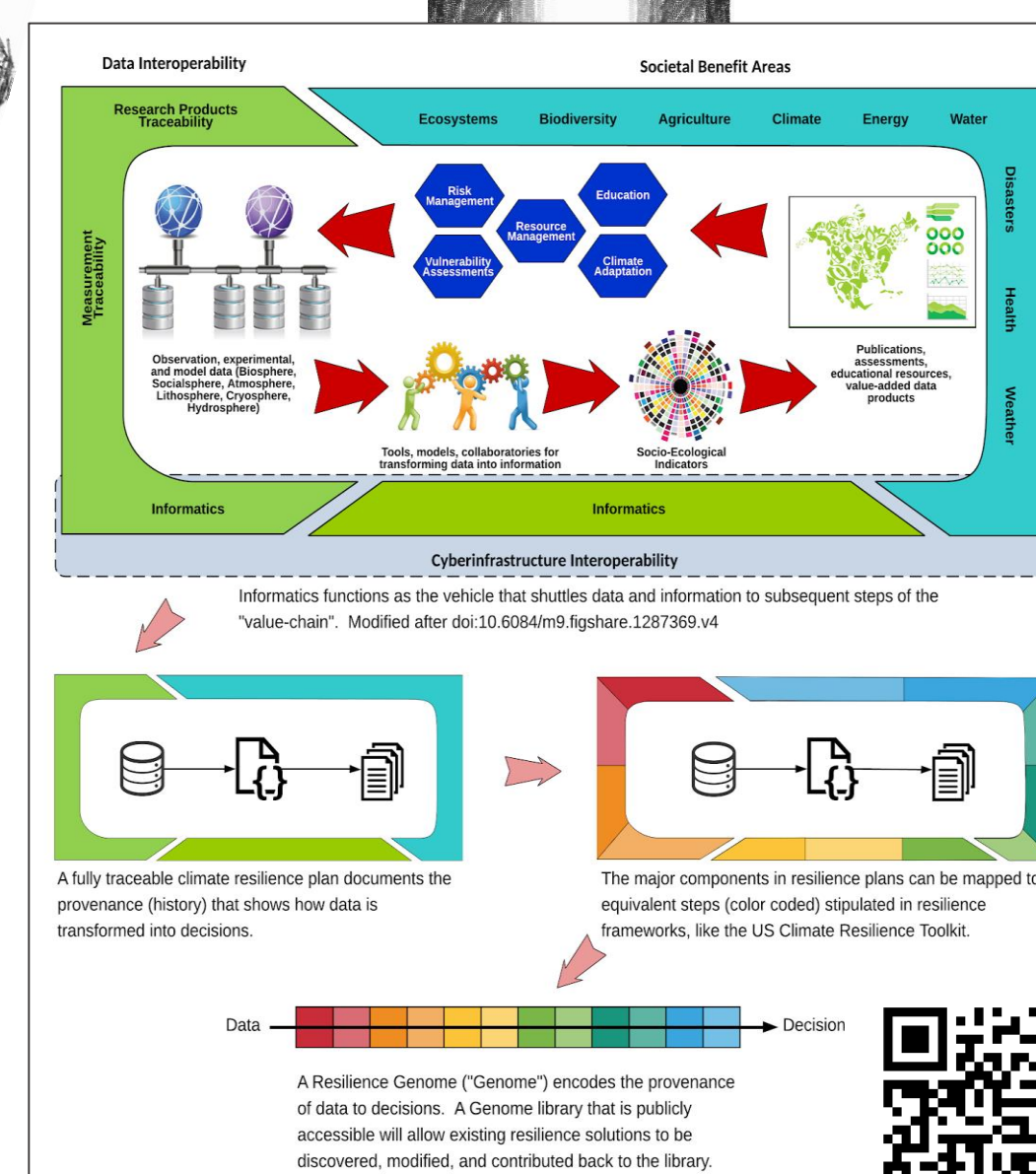
## Introduction

**Arika Virapongse**  
Principal, Middle Path EcoSolutions  
Webinar series coordinator, ESIP  
[av@middlepatheco.com](mailto:av@middlepatheco.com)

## The “pipeline” of Earth science data to climate resilience and its value for real-world decision making

October 2, 2018 | Webinar #4

www.esipfed.org @ESIPfed | #ESIPfed ESI is supported by    and 110+ members



**Data to decisions  
provenance: ESIP Lab  
project to encode  
provenance for CRT case  
studies**

## Midwest Floods

**Erosion**

**(Obstacle)**



**2019 ESIP Summer Meeting:  
Workshop on Soils Data  
Standards**  
July 18, 2019  
Tacoma, WA

Poster design: Eleanor Davis,  
University of South Carolina, 2018-  
2019 ESIP Community Fellow

